

ADDENDUM E — THE SOLFEGGIO TONES AND MITOCHONDRIAL DNA: SECRETS OF THE CUBE OF METATRON GATEWAYS

The latest information from the Other-dimensionals is the most mind-blowing. Once again, several files have shown up on two different thumb drives and one portable hard drive, all locked away securely in a safe that showed no signs of breaking or entering. The first set of files proved to be the most challenging, containing a text message and a picture:

“ ... we have been asked to provide you with further information on the work you have unfolded regarding the DNA process. That which you have already discovered about the original seed codes and how they make up the Divine Species when merged is only a part of the DNA awakening procedure. The seed coding of the individual is carried within the mitochondrial DNA and that is the DNA which holds the coding for travel across time and space. All of the DNA for the original blueprint for the Human Being is stored here. This DNA connects us to the Divine Species Collective. All supergalactic information comes from the mitochondrial DNA.



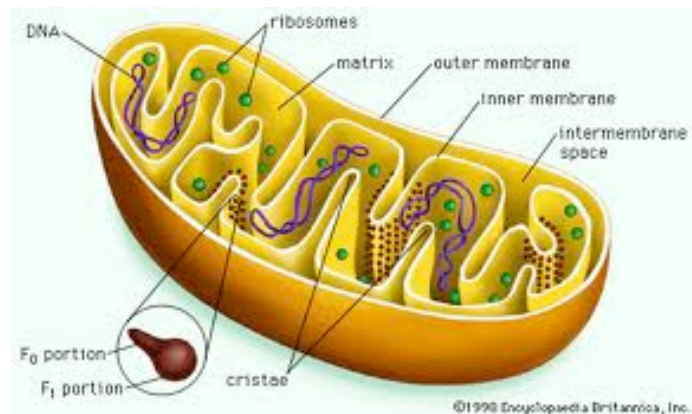
“Within the nucleus of the DNA is a gateway that connects us to the position each being holds in the Matrix of Light. This works as a portal for which one can reconstruct the DNA that exists within the nucleus. Through us all we reform the original energetic matrix that spawned all of creation. The gateway and the DNA information within the nucleus exists to create nothing but a meshing with the mitochondrial DNA. There is a correlated reconstruction of both the nuclear and mitochondrial DNA but that directly depends upon one's relationship with the Light Matrix. The binary codes within the DNA unfold how one manifests into planetary life. How one's personal hologram is created and reacts with the Planetary Hologram.

“Through the harmonic created by the activation of the 3-in-1 symbols along with the lifeforce energies the seed DNA is able to activate bringing us into alignment with our positioning within the Divine Light Matrix. Thus aligning all of those who have been brought into full DNA activation with the Divine Species Collective.”

The immediate questions that popped up were, “What are seed codes? What is the Divine Species Collective? What is the Divine Matrix of Light? What is the 3-in-1 symbol?” To say nothing about the picture they sent.

My first line of reasoning led me to try and figure out what the picture was. I scoured the Internet looking for cubes that somehow might be related to mitochondria. I knew, from looking at pictures of mitochondria in cells that the picture was a bit similar. Mitochondria are thought to have the main purpose of creating energy for the cell. Within a mitochondrion are loops of DNA. This DNA is not shaped like the DNA in the nucleus, which has x-like arms that connect at a central spot called the centromere. Here is a typical picture of a mitochondrion:

Notice how the DNA forms loops or rings. Each mitochondrion contains between 2 and 10 copies of the DNA loop, depending on the needs of the cell. The greatest number of mitochondria are found in the area of the brain, where the most energy is needed. The number of mitochondria in a cell can vary from one to many thousands.



My thought that the inner membranes of the mitochondrion were similar to the cube picture proved to be false. After giving up my search, I called Matthew Michaels, who had received the files in the first place, and told him I could make no sense out of the picture. He said he would try and get more information from the source that left the files in the first place. Within five minutes he had called me back. “I found a copy of the picture on the Internet.”

“How?” I asked, wondering what had taken me several days to fail at he had accomplished in a few minutes.

“They told me to look up ‘Cube of Metatron frequencies.’ ” I had to laugh out loud. That was a term I, myself had coined. Yet I failed to think of using it in my search. And not wanting to believe that the answer was so simple, I did a Google search myself on Google Images, and sure enough, there it was. I had completely missed the point of the picture. It was to get me to look at the work I had done long ago on the Cube of Metatron Frequencies and how they related to mitochondria. The Cube of Metatron Frequencies are subsets of the different solfeggio scales. I was first made aware of the frequencies from the physical appearances of Archangel Michael to Joe Crane. Michael had told Joe how the frequencies worked, labeling the single set of numbers he had given to Crane “the frequencies of the Divine Masculine.” After weeks of researching the mathematics of this subset, I finally figured out how they worked together and why Michael had given them the specific name. However, I discovered that there was not only one set but nine sets of the frequencies, all oriented around the geometry of the Cube of Metatron, which is how I came up with my name for them.

You can look at the geometry of some of the scales at www.soundsofwonder.com/pdf/files/grandsolfeggio.com. The matrix of the Cube of Metatron Frequencies looks thusly:

1	2	3	4	5	6	7	8	9
111	123	135	147	159	162	174	186	198
222	234	246	258	261	273	285	297	219
444	456	468	471	483	495	417	429	432
666	678	681	693	615	627	639	642	654
999	912	924	936	948	951	963	975	987
1011	1023	1035	1047	1059	1062	1074	1086	1098

All of these frequencies are, of course, solfeggio. The frequencies containing zeros are the tones that move the scale (1-9) into a higher dimensional fractal. That gets far too complicated to go into here.

THE SEED CODES

Matt had already discovered the DNA seeds codes before the Other-dimensionals had sent this message. He has become quite adept at working with DNA after the July 17th episode (cited in the opening of the main part of this paper). From his further exploration of trying to understand how his own DNA works, because he has genetic disorder he has long struggled with, he began to understand in more detail how DNA actually works with the body, rather than how we the medical field has been assuming. Matt discovered there is a part of the DNA that has nothing to do with genes but the vibration of one's own soul. In the same way the microtubules lock together the strands of DNA in the nucleus of the cell, the microtubules also translate vibrations from consciousness, as written about by Hammeroff and Penrose (cited earlier). Though philosophers have long argued about the role of the soul versus our consciousness, Matt discovered that the two are inseparable. It is the soul that sends the story of who we are and how we are to the consciousness of the body. And each soul has embedded in it one of seven archetypes that work our consciousness in how we interact with the rest of creation.

I have written two books already based upon a similar archetypal system used by the angels in working with humanity. The angels use this system not only to assist humanity but to show humanity how it can heal itself and move into a place of ending our days of suffering. That archetypal system I have called the Seven Soul Rays. I did that because this system works in parallel with what we call visual light. Light is the building block of all of creation. But it is not the only building block, Matt and I have discovered. There are two other building blocks, which, ironically, also show up in the structure of the Cube of Metatron Frequencies. I will discuss that later in the section called "The Matrix of Light Theory."

The counterpart to the earthly archetypal system is a galactic-based system called the Seven Soul Seeds. What took me two books to convey from the angels is not going to be handled in a few paragraphs with this new system. Rather than get into how this system

was discovered, I believe it would be more fruitful just to explain it. These seven soul seeds correspond to how the conscious beings across galaxies can work together. More and more, working together is playing a huge part in the changes we are now witnessing. Matt came up with the categories for the seven seeds. Certainly others may choose to come up with with different names, and that is fine. This is simply a working model.

Listed in order of archetypal soul vibration:

Name	Geometric Connection	Soul Purpose Archetype	Solfeggio Scale
Ether Seeds	penta-dodecahedron x 2	magi or the Wizard	5
Fire Seeds	tetrahedron	leaders or the King	4
Plasma Seeds	dodecahedron	change-makers or the Warrior	3
Water Seeds	icosahedron	growth-bringers or the Queen	8
Earth Seeds	cube	servers or the Lover	6
Air Seeds	octahedron	searchers or the Scholar	2
Crystal Seeds	sphere	chameleons or the Child	7

The Three-In-One Symbols

“Through the harmonic created by the activation of the 3-in-1 symbols along with the lifeforce energies the seed DNA is able to activate bringing us into alignment with our positioning within the Divine Light Matrix...” (A quote from the Other-dimensionals.)

Throughout history there have been various representations of 3-in-1 symbols, whether they be religiously based, culturally based, or scientifically based. For instance, in Christianity we see theology of the triune God represented by the Father, Son, and Holy Spirit; the Father being masculine, the Holy Spirit being feminine, and the Son being the bridge between the two (the androgyne). In quantum physics we see something similar in the make up of life: particles, waves, and particle-waves which carry the characteristics of both waves and particles without being either. We also see this triune metaphor showing up in the physics of the Theory of Everything, especially in E8 model, where we have the forces of electromagnetism made up of triune particles (quarks). In culture, we typically see a consciousness of dualism. However, more and more the notion of dualism is yielding to triadism: body, mind, spirit ... masculine, feminine, androgyne (neuter). In English, neuter means neither male nor female. But in Hebrew, neuter means both male and female, with most of the names of God being in the neuter.

Because the previous addenda indicated that DNA is actually electromagnetic based, the triune metaphor seems appropriate to pursue. The question is how to understand the intention of the elves in pointing me at the 3-in-1 systems. Yes, we have to pay attention to the fact that the plural is used in their message.

One of the 3-in-1 components I wish to bring to light is transformational levels of electromagnetics. It's now obvious to physicists that light can be slowed down. Really slowed down. It turns out that if you put light through a Bose-Einstein condensate, you can slow it down to mere hundreds of miles an hour. I won't go into how this is done because I don't understand it. But I will use the fact that quantum physics labs are now able to do this on a repeatable basis. What is even more extraordinary is that a photon that is slowed to the speed of the sound barrier no longer stays a photon! It changes into what scientists call a "phonon." Some would call this a sound particle, others would call it a lattice vibration, which is sci-babble for "you can feel it go bump." The point is that the phonon operates in the realm of what we call sound. You play your speakers loud enough and you can feel the force of the sound coming at you. What's particularly interesting is that there is now a direct connection between the Solfeggio System and photons (light). So let's proceed with this.

It's been known for a while that sound can cause electromagnetic effect — better known as pizo-electrics. In other words, you can change sound into electricity. I see this as the reverse of changing a photon into a phonon. And that tells me we have a two-way flow between these worlds of sound and light.

But what about a third component? Could it be that there is also a direct correlation of speeding up a photon in a Bose-Einstein condensate? Some physicists think so. In what is called the "Ralph Sansbury experiment," a link between electrostatic force and gravity was made. In the experiment, Sansbury created 10 nanosecond long pulses of laser light, one pulse every 400 nanoseconds. These beams of light were directed at a target across the room called a photodiode detector. What was so interesting is that Sansbury put a moveable blocking device (called a "pocket cell") between the target and the laser beam generator. This blocking device only went into the blocking position in between the pulses of laser light. This would lead one to think, No big deal, What a waste of time. Why bother putting up a block only when it is not needed to block light? But that's what he did. One would expect the light beams to arrive at the target unimpeded because the impedance had been removed during the time the laser beam was traveling passed it. However, what Sansbury discovered was that NO light reached the target. How was that possible? This was a direct contradiction to the theories of light (Maxwell's theory on the propagation of electromagnetic waves). Apparently, other forces were in play here. Light was not what scientists thought it to be. What Sansbury et al came up with was a new phenomenon associated with electromagnetics, called "subtrons." From this premise, he then calculated that these charged particles could theoretically travel at a speed of 2.5 million light years per second, which later was termed "instantaneous action at a distance." This now gets us into the category of gravitons, which seem to be instantaneous in their theoretical effect.

Some physicists believe there is a third barrier in partnership with the sound barrier and the light barrier. Yes, we are looking at the realm of gravitons ... gravity. In similar fashion to slowing down a photon in a Bose-Einstein condensate to the point it changes into a phonon, there are some who believe that if you speed up light in a Bose-Einstein condensate to c^2 (square the speed of light), the photon changes into a graviton. The world of the graviton then begins to look a lot like characteristics of subtrons, in that

instantaneous distance now approximates what is called non-locality, being everywhere at the same time. And all of a sudden DNA now starts to look like it actually does have the potential to cross all barriers of existence using the monoatomics in the brain as Bose-Einstein condensates ... when soliton waves are involved. Because of the brain's ability to generate soliton waves, the entire DNA-based system of the body (nuclear DNA and mitochondrial DNA) now are able to turn a human being into a walking time machine!

A second 3-in-1 component, related to electromagnetics, is the role of solitons themselves. There seem to be two aspects of soliton waves that fit the 3-in-1 paradigm. Within Bose-Einstein condensates (BECs), there can exist what called "dark solitons," or "bright solitons," or "eternal solitons." Yet on another level, solitons can be categorized by their speed, where one category of solitons is limited by the sound barrier, another by the light barrier (optical solitons or electromagnetic solitons), and a third that exceeds the speed of light barrier (gravitational solitons). It cannot be mere coincidence that solitons as waves mimic particles in particle theory. There must be some overriding archetype that should be paid attention to that seems to rule the universe. Having said that, I do not wish to imply that this is the only archetype that rules the universe. Arguments can also be made for 4-in-1 models, 5-in-1 models, and 6-in-1 models. However, in this section, I wish to focus on the 3-in-1 models because the elves obviously are pointing to them with regards to DNA.